

# TEX GROUP

BRITISH MANUFACTURING





## Introduction

We're celebrating more than 100 years of manufacturing. Our story begins in 1906, with The British Steel Piling Company (BSP), founded by Edward Le Bas.

BSP designed and manufactured sheet piles and steam-powered piling hammers. The company's influence continued to grow and for many years, it was also involved in the manufacture of drilling, earth boring and tunnelling machines. During the early 1970s, the newly nationalised British Steel Corporation took over the marketing of all UK-produced steel sheet piling, and BSP made a global impact. BSP was acquired by TEX in 1989.

Over the years, the Group has diversified and now includes a broad range of companies operating in the manufacturing sector.

We would also like to extend our gratitude to all those valued suppliers who have supported us and feature throughout this brochure.



Below: An early BSP steam piling rig, Great Blakenham, 1920s.



**TEX GROUP LTD**  
Claydon Business Park, Gipping Road,  
Gt. Blakenham, Ipswich, Suffolk, IP6 0NL, UK

Tel: +44 (0)1473 830144  
Email: [tex-group@tex.co.uk](mailto:tex-group@tex.co.uk)  
[www.texgroup.co.uk](http://www.texgroup.co.uk)



## Tex Group

TEX GROUP is home to six companies with design and manufacturing facilities spread across five UK sites.

Below: Meet the team! Introducing the all-new BSP-TEX JX Piling Rig.



**BSP-TEX** manufactures piling and ground improvement equipment, road maintenance machinery, custom trailers and utilities enclosures.

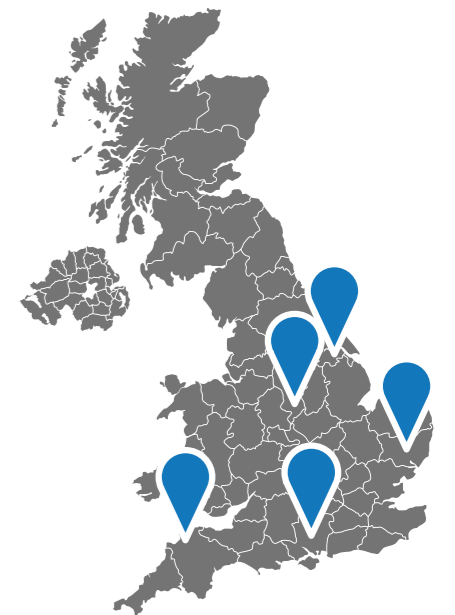
**G&M EUROTEX** provides custom containerised generators and Lloyd's accredited marine diesel service engineering.

**QK-TEX** manufactures lightweight honeycomb panels.

**TEX PLASTICS** produce injection moulded components. Services include prototyping, mould making and high volume production.

**TEX ATC** are the UK's leading provider of air traffic control rooms. Products and services include their standard MV8 Series air traffic control rooms and control room glazing solutions.

**CAIGATE-TEX** provides hybrid energy and smart microgrid solutions.



**TEX GROUP LTD**  
Claydon Business Park, Gipping Road,  
Gt. Blakenham, Ipswich, Suffolk, IP6 0NL, UK

Tel: +44 (0)1473 830144  
Email: [tex-group@tex.co.uk](mailto:tex-group@tex.co.uk)  
[www.texgroup.co.uk](http://www.texgroup.co.uk)





## BSP-TEX

**Pioneers in the field, BSP-TEX have designed and manufactured piling and ground improvement equipment for more than 117 years.**

Historically, products included steam-powered piling hammers, pile extracting equipment, winches, early iterations of cement mixer trucks and truck cranes, tunnel boring machines and concrete mixers.

Today, the Company operates across four divisions: piling and RIC, road maintenance machinery, subcontracted manufacture of custom trailers, and subcontracted manufacture of utility enclosures for governors, meters, modems, instrumentation and data loggers.



**Opposite top:** The JX Piling Rig is self-erecting and radio-controlled.

**Opposite below:** Rapid Impact Compaction (RIC) is a technique used to increase the bearing capacity of soils through controlled impact.

**Below:** With a maximum dropweight of 40t/88,185 lbs, the CGL range are the largest BSP-TEX hammers.

### GREENSHIELDS JCB COLLABORATION

#### BSP-TEX JX25-8 Piling Rig adaptation of JCB 220X LC

The JX Piling Rig is mobile, self-erecting and radiocontrolled. The rig is mounted on a JCB base unit, uses a 12.5m single piling mast, and any one of the three BSP-TEX hydraulically accelerated piling hammers from the DX range. The JX Piling Rig is capable of driving steel, wood or concrete piles up to 8m in length.



- Hydraulic piling hammers
- Piling rigs
- Power packs
- Rapid Impact Compactors



**BSP-TEX LTD**  
Claydon Business Park, Gipping Road,  
Grt. Blakenham, Ipswich, Suffolk, IP6 0NL, UK

Tel: +44 (0)1473 830431  
Email: sales-bsp@tex.co.uk  
www.bsptex.com



**BSP-TEX LTD**  
Claydon Business Park, Gipping Road,  
Grt. Blakenham, Ipswich, Suffolk, IP6 0NL, UK

Tel: +44 (0)1473 830431  
Email: sales-bsp@tex.co.uk  
www.bsptex.com





# MEOX

POWERED BY  **DUNLOP HIFLEX**

Introducing MEOX, the largest hydraulic hose assembly manufacturer in the UK. We proudly deliver cutting edge technology and unrivalled product support to the UK's heavy construction industry and beyond, at very competitive prices.

## Market-Leading Hydraulic Hose Products

It's widely recognised that our Dunlop Hiflex hydraulic hoses are some of the most reliable, flexible, robust and cost effective, available for purchase anywhere in the world. Validated to 1m impulse cycles, they quite simply work harder for longer.

Our product range also includes quick release couplings from world renowned Stucchi. As a main UK distributor, we hold vast quantities of the entire range, giving businesses instant access to a market-leading product at fantastic prices.

## Technical Support

We have some of the UK's best technical applications engineers to provide on-site technical support and assist with any product specification. Having access to the latest products coupled with our high-tech production facilities means that MEOX is at the forefront of modern hydraulics.

## Service Division

Should you require emergency hydraulic assistance in the field, our service division – Eastern Hose Onsite - operates the UK's largest independent fleet of hydraulic breakdown vehicles. With 52 vehicles positioned nationwide, this fast and affordable service is underpinned by the use of our Dunlop Hiflex hydraulic hose products.

For product information, technical assistance and pricing, contact MEOX today.

[info@meox.co.uk](mailto:info@meox.co.uk) | 0345 512 0175

[meox.co.uk](http://meox.co.uk)



**MEOX**  
POWERED BY  **DUNLOP HIFLEX**

**BSP/TEX**

Piling Hammers, Road Machinery & Enclosures

**TEX GROUP**



- Trojan asphalt mixers
- Belspray emulsion sprayers
- Wallis emulsion sprayers
- Bristowes chip spreaders
- Springwood road marking
- Bitmen accessories
- RM Trailers
- Allied Kiosks & Enclosures



**Above:** BSP-TEX utilities enclosures.

**Left:** RM Trailers design and manufacture custom trailer products.

**Top:** BSP-TEX manufacture a range of road maintenance equipment.



**BSP-TEX LTD**  
Claydon Business Park, Gipping Road,  
Gt. Blakenham, Ipswich, Suffolk, IP6 0NL, UK

Tel: +44 (0)1473 830431  
Email: [sales-bsp@tex.co.uk](mailto:sales-bsp@tex.co.uk)  
[www.bsptex.com](http://www.bsptex.com)

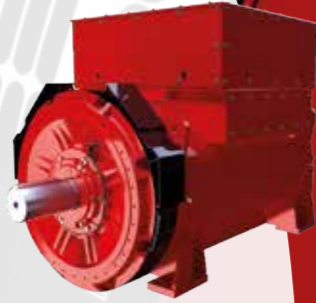




**PROUD TO PARTNER WITH G&M TEX GROUP**

**Congratulations on reaching your 100 year milestone**

STAMFORD | AvK is the ultimate alternator solution for world-class expertise and 24/7 global lifecycle support up to 11,200kVA



**STAMFORD | AvK**  
POWERING TOMORROW, TOGETHER [stamford-avk.com](http://stamford-avk.com)

**Specialising in Plant & Machinery Transport**



[www.mgtsuffolk.co.uk](http://www.mgtsuffolk.co.uk)

**MGT** MGT, Corner Farm, Lawshall Road, +44 (0)1284 827118  
**HIAB HIRE** Cockfield, Bury St. Edmunds, +44 (0)7710 782340  
Suffolk, IP30 0JP [info@mgtsuffolk.co.uk](mailto:info@mgtsuffolk.co.uk)



Custom AC Generators & Marine Diesel Services



**G&M EUROTEX**

**G&M EUROTEX design, manufacture, install and commission purpose-built containerised AC generators.**

Backup power for airports, data centres, National Grid, NHS hospitals and offshore wind farms. The service division delivers Lloyd's accredited marine diesel engine refurbishment, service and spares.

G&M EUROTEX custom marine generator solutions provide standby power and continuous power to all marine vessel types including military ships, superyachts and workboats.

**Below:** G&M EUROTEX design and build emergency AC power generators for the Irish Naval Service, the Royal Australian Navy, the Royal Navy and the United States Navy.



REICH Drive Systems UK Limited are proud to partner with G&M Eurotex, providing the highly flexible Power Transmission Coupling connection between the engine and a 2-bearing alternator on a generator set.

REICH select the optimum coupling based on the engine mass elastic data and alternator inertia, providing a 2 mass Torsional Vibration Calculation, or an N-Mass Torsional Vibration Analysis where appropriate, to accompany the 2d and 3d model of the proposed coupling, ensuring the best fit for the installation, with the best technical advice and support for G&M Eurotex and their customers.

REICH products are marine approved by all the major classification societies.

[www.reich-uk.com](http://www.reich-uk.com)

[info@reich-uk.com](mailto:info@reich-uk.com)



Reich Drive Systems UK Limited  
Unit 4 Bankside Business Park  
Stockport SK5 7PG  
0161 714 4191

**Automatic fire suppression systems for specialist risks, machines & machinery spaces**

**0845 0344140**  
[enquiries@combatfire.co.uk](mailto:enquiries@combatfire.co.uk)



[www.combatfire.co.uk](http://www.combatfire.co.uk)



# TOGETHER WE POWER THE WORLD



**meccalte**

Whatever the task. Wherever you are. We've got what you need.

The world's largest independent producer of alternators 1-5,000 kVA LV | MV | HV

**POWER**  
FROM WITHIN

FOR FURTHER INFORMATION VISIT [WWW.MECCALTE.COM](http://WWW.MECCALTE.COM)

## Remanufacturing diesel engines and components since 1972



**S&L Engine Services Ltd**

Railway Passage, Longton,  
Stoke-on-Trent,  
Staffordshire, ST3 1BY

[www.dieselenineservices.co.uk](http://www.dieselenineservices.co.uk)

Phone: 01782 599 245  
Email: [info@slengines.co.uk](mailto:info@slengines.co.uk)

**G&M  
EUROTEX**

Custom AC Generators & Marine Diesel Services

**TEX  
GROUP**

### OFFSHORE WINDFARMS

**G&M EUROTEX has participated in major offshore windfarm projects, most recently in Europe.**

G&M EUROTEX have the technical ability to navigate challenging design briefs and swiftly adapt the design according to your requirements.



**A host of industrial power packs and generators for services including:**

- Hospitals
- National Grid
- Data centres
- Airports
- Offshore
- Navy vessels
- Superyachts
- Research vessels
- Workboats

**Left:** G&M EUROTEX custom-built generators are used by the National Grid (NGET).



**G&M EUROTEX LTD**

Claydon Business Park, Gipping Road,  
Gt. Blakenham, Ipswich, Suffolk, IP6 0NL, UK

Tel: +44 (0)1473 662777

Email: [sales-gmeurotex@tex.co.uk](mailto:sales-gmeurotex@tex.co.uk)  
[www.gmtex.co.uk](http://www.gmtex.co.uk)



Made in the UK





### SPARE PARTS

**G&M EUROTEX stocks a wide range of marine diesel engine parts.**

We supply service kits, mandatory-change parts, consumable parts, regulation replacement parts for overhaul, major parts – both new and refurbished. Call our team to discuss your requirements.

Eurotex International merged with G&M Tex in 2021. We conduct marine diesel engine maintenance programmes for numerous clients including BAE Systems and the Royal Navy.

Our UK workshop facility is comprehensively equipped to undertake complete engine rebuilds and in-house testing. G&M EUROTEX refurbishment includes complete disassembly, cleaning, inspection, replacement parts, assembly and testing of various models including Paxman engines. Factory-overhauled engines and related equipment from G&M EUROTEX are restored to peak condition, backed by guarantee and achieve full life expectancy. Refurbished G&M EUROTEX engines represent a cost-effective alternative to an upgrade and the associated costs of changing engine model.

Inspection forms a large part of G&M EUROTEX activities; typically, during refurbishments, over 673 measurements and over 55 levels of inspection are applied throughout.



**Above:** Paxman 16YJ engine in build.



**G&M EUROTEX LTD**

Claydon Business Park, Gipping Road,  
Gt. Blakenham, Ipswich, Suffolk, IP6 0NL, UK

Tel: +44 (0)1473 662777  
Email: sales-gmeurotex@tex.co.uk  
www.gmtex.co.uk



## TEX ATC

**TEX ATC are the UK's leading provider of air traffic control rooms. Products and services include control room glazing solutions and high specification ship windows.**

The majority of TEX ATC control rooms are specialised and bespoke, and our team of highly experienced technical consultants, designers and engineers develop all projects in-house.

The MV8 Series is a range of standard modular air traffic control rooms, designed by TEX ATC and manufactured and supplied worldwide for rapid installation.

- Custom and standard control room designs
- Control room glazing
- Engineering services
- Refurbishment
- High specification ship windows

### MV8 SERIES

**MV8 Series air traffic control rooms are available as a kit, complete with detailed assembly instructions. Alternatively, a TEX ATC Project Manager can oversee the installation.**

Two sizes are available. The smallest MV8-30 has a floor area of 30m<sup>2</sup> (up to approx. 5 operators) and the larger MV8-50 has a floor area of 50m<sup>2</sup> (up to approx. 9 operators).

Choose from optional extras such as intumescent paint, lower walkway, laminated and heated glazing, electric solar blinds and operator consoles.

The Oman Aviation Academy in Sohar chose one of TEX ATC's standard MV8 Series control rooms for the new ATC tower (pictured here).



**TEX ATC LTD**

Claydon Business Park, Gipping Road,  
Gt. Blakenham, Ipswich, Suffolk, IP6 0NL, UK

Tel: +44 (0)1473 830144  
Email: sales-texatc@tex.co.uk  
www.tex-atc.co.uk







**ENGINEERED WITH EXCELLENCE**  
 CUSTOM GLASS SUPPLIER TO TEX ATC

LEWMAR TrendMarine Taylor Made

sales@trendmarine.com

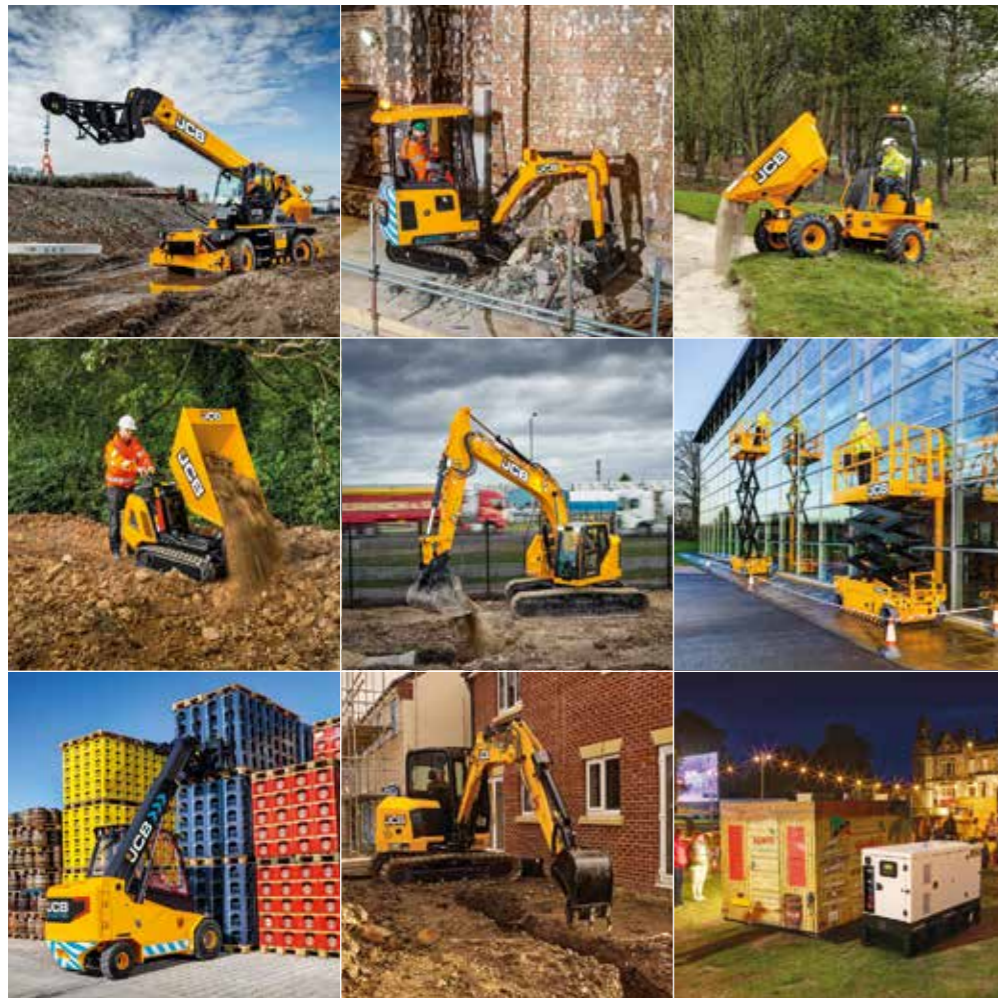


THINKING SPACE

# Air Traffic Control Furniture Specialists

Tower. Approach. Remote. Simulators

www.thinking-space.com



Whatever your plant requirement, we have the machine for you.

Greenshields JCB is the South East of England's premier dealer of JCB machinery.

Visit our website to see all the JCB machines on offer or simply give us a call - we're here to help.

www.greenshieldsjcb.com  
 01420 525900



GREENSHIELDS JCB

**Right:** The visual control room at Thumrait airbase is a 15m (49ft) diameter, 24-sided structure, attired with a conical parapet and roof dome.

**Bottom right:** TEX ATC were awarded the contract to design, manufacture and project manage the installation of the Flying Control Room as well as all windows, wipers and blinds on HMS Queen Elizabeth and HMS Prince of Wales.

**Below:** The control room at Muscat International is one of the largest that TEX ATC have completed; the tower is over 97m (318ft) high and there is 100m<sup>2</sup> (1076ft<sup>2</sup>) of floor space.



**TEX ATC LTD**  
 Claydon Business Park, Gipping Road,  
 Gt. Blakenham, Ipswich, Suffolk, IP6 0NL, UK

Tel: +44 (0)1473 830144  
 Email: sales-textatc@tex.co.uk  
 www.tex-atc.co.uk





# TEX PLASTICS

TEX PLASTICS provide high-quality injection moulded parts to five industry sectors. We are more than just a moulder because our development and manufacturing services range from product concept, through prototyping, mould making, validation and into high volume production.

Let us help you to streamline your component supply chain, reduce lead times and maximise the cost-effectiveness of the component produced with our extensive post moulding operations.

TEX PLASTICS has recently invested in energy efficient machines, energy saving technology, and use re-processed polymers.

- Medical
- Life critical
- Electronics
- Buildings & interiors
- Construction & exteriors

## ISO 13485 MEDICAL DEVICES

TEX PLASTICS is now accredited with ISO 13485. BS EN ISO 13485:2016+A11:2021 is the international standard that sets out regulatory requirements for medical device quality management systems.

We operate EN14644 class 7 cleanrooms for manufacturing injection moulded components, and work with medical device manufacturers to develop prototypes and bring products to market.

Areas of expertise include disposables, orthopaedic devices, surgical instruments, diagnostic and patient monitoring components, medicine delivery systems, ophthalmic devices, and medical packaging.



## 26.7% ENERGY SAVINGS

TEX PLASTICS invited Best.Energy into our manufacturing facilities to see how cutting idle times and behavioural changes could help us on our Net Zero journey.

“The Best.Energy system tags assets and the software builds a profile of energy usage. Opportunities for saving energy are highlighted and monitored in real time”.

**Justin Davies**  
 Managing Director, TEX PLASTICS



**This page:** Specialists in the development and manufacture of medical devices, components and packaging. With extensive Class 7 Cleanroom manufacturing cell capability for injection moulding and component assembly of non-sterile medical products.







Celebrating  
**20**  
YEARS

Making things  
better for  
20 years



Your injection moulding manufacturer

Your go-to choice for:



Complex tooling



Multi-cavity tooling



Fast cycling mould tooling



20 years' experience



Cost effective tooling solutions



In-house toolroom

From inception to delivery and support,  
we'll make things better for you

sales@sino-manufacturing.co.uk +44(0)1373 470391  
sino-manufacturing.com



Left: Bott Box plastic storage solutions.

- Design for manufacture
- Rapid prototyping
- Tooling solutions
- Precision injection moulding
- Value-added post mould operations
- Tailored assembly and packing solutions



Intafast limited have been established since 1988 and have become a major independent fastener distributor.

One of our core products are brass inserts for the plastic moulding industry.

Intafasts extensive range include more than 20 standard variations. We can also have parts manufactured to your specific requirements.

Our product knowledge and engineering experience means we are well placed to provide a solution to any brass insert requirement.

Call our sales office or visit our website for more information.

We are proud to have been a supplier to TEX Group for over 15 years and look forward to many more!



Brass - to BS EN 12164  
CW614N - RoHS COMPLIANT

W: intafast.com E: sales@intafast.com T: 01323 502 374

## WOMEN IN PLASTICS

A big thank you to Rebecca Shortland from the British Plastics Federation (BPF) for highlighting some of our industry's female role models for International Women's Day, including Rebekah Parsons from Tex Plastics.

"Highly accomplished women in the industry have paved the way and it makes me want to strive to accomplish as much as I can in my field. The sky is the limit".

**Rebekah Parsons**  
Setter Technician, TEX PLASTICS



TEX PLASTICS LTD Email: info@tex.co.uk www.tex-plastics.co.uk  
Midlands: Wetherby Road, Derby, Derbyshire, DE24 8HL, UK. Tel: +44 (0)1332 363249  
South-West: Avimore Industrial Estate, Barnstaple, Devon, EX31 2EU, UK. +44 (0)1271 378528





# QK-TEX

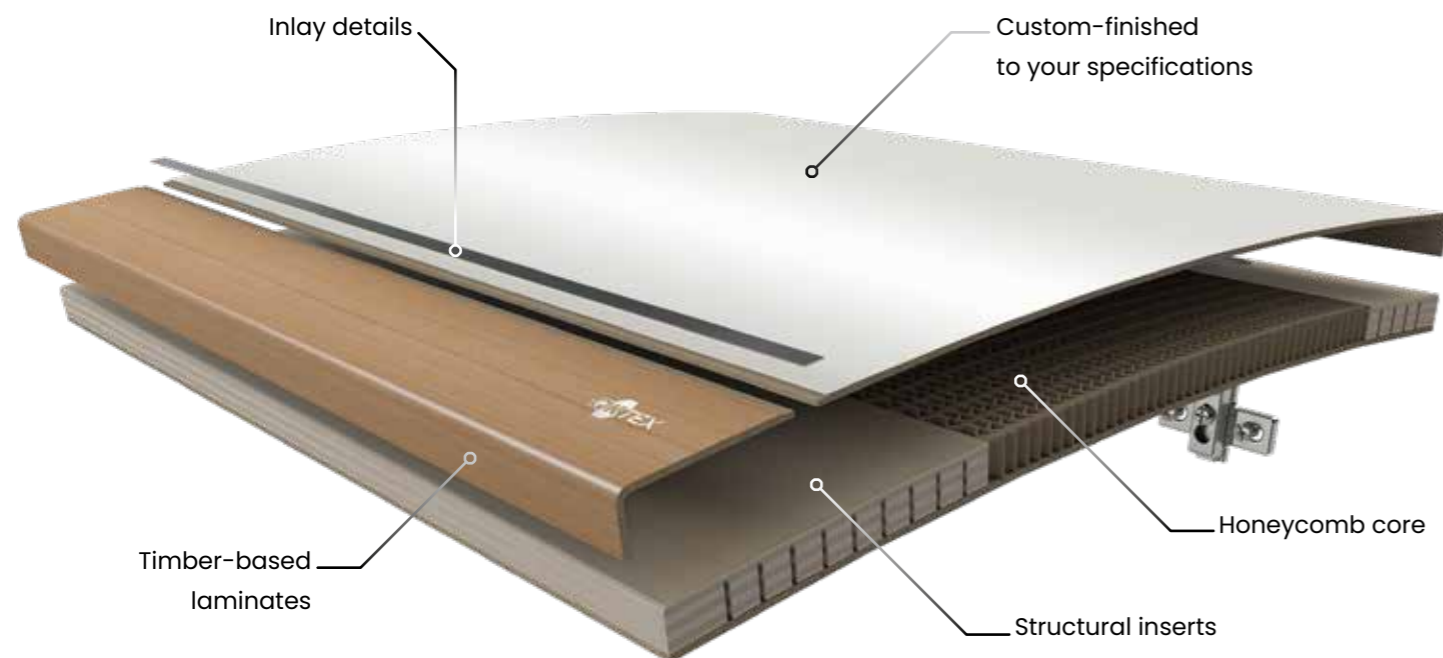
**QK-TEX manufacture custom honeycomb panel components to your specification. The timber-based sandwich panel construction provides excellent rigidity at minimal weight. We are the UK's No.1 caravan and motorhome interior panel manufacturer.**

Our panels can be flat, curved, thick or thin, shaped, edged, machined, and finished to your precise specifications. Panels benefit from up to 66% weight reduction compared to alternatives. We offer both fully finished products and products that can be worked on by others.

- Leisure vehicle (RV) panels
- Lightweight furniture panels
- Retail interiors

**Below:** Showing the construction of a curved caravan locker door.

**Page 22:** QK-TEX curved panel manufacture.



Scope	Capabilities
<b>Typical raw finishes</b>	Plain MDF, plywood, composite card
<b>Typical finished surfaces</b>	Laminates, decorative papers, vinyl, PVC, PET
<b>Core materials</b>	Large and small cell honeycomb and corrugated core, composite foams, plywood and MDF
<b>Tops</b>	Sink tops, worktops, tables, straight and shaped edge banded
<b>Doors</b>	Flat and curved, toilet and sliding doors, postformed doors, straight and shaped edge banded
<b>Vacuum formed</b>	Roof light/window surrounds, furniture fronts, feature panels, fascia panels, and curved panels
<b>General – your design</b>	Panels typically from 11–53 mm thickness, raw and fully finished, framed or unframed



**QK-TEX LTD**  
Enterprise Court, Brigg,  
North Lincolnshire, DN20 8UJ, UK

Tel: +44 (0)1652 654701  
Email: sales-qktex@tex.co.uk  
www.qkhoneycomb.co.uk



## VIGOLUNGO POPLAR PLYWOOD THE POWER OF LIGHTNESS

Automotive industries, caravan and nautical, furniture, construction, packing, DIY.

**E. VIGOLUNGO SPA**

[www.vigolungo.com](http://www.vigolungo.com)

**Offices**

Regione Clementina - 12043 Canale (Cn) - Italy  
Ph. +39 0173 979048 - trade@vigolungo.com

**Manufacturing Plant**

Via F.lli Maccagno  
12043 Canale (Cn) - Italy

APPROVED SUPPLIERS OF EDGE-BANDING MATERIALS & ANCILLARIES TO TEX GROUP & THE TRADE



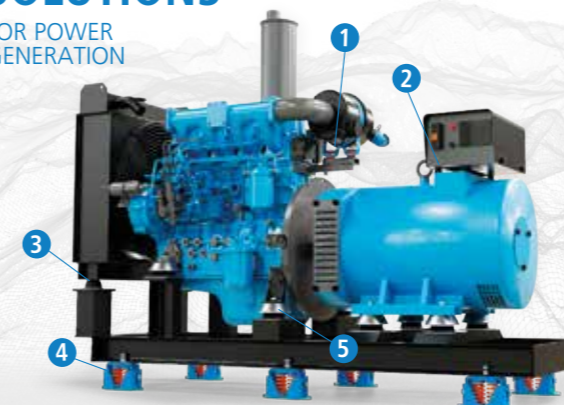
Phone: +44 (0) 1926 408954 Email: info@warwickedging.com  
[www.warwickedging.com](http://www.warwickedging.com)

Unit D Welton Road, Wedgcock Industrial Estate, Warwick, Warwickshire, CV34 5PZ

## TECHNICAL ANTI VIBRATION SOLUTIONS



FOR POWER GENERATION



LET US UNDERSTAND YOUR CASE

**Lewis Metcalf**  
Applications Engineer - UK & Ireland  
www.amcuk.co.uk  
+44 (0)7523 118  
lewis.metcalf@amcuk.co.uk



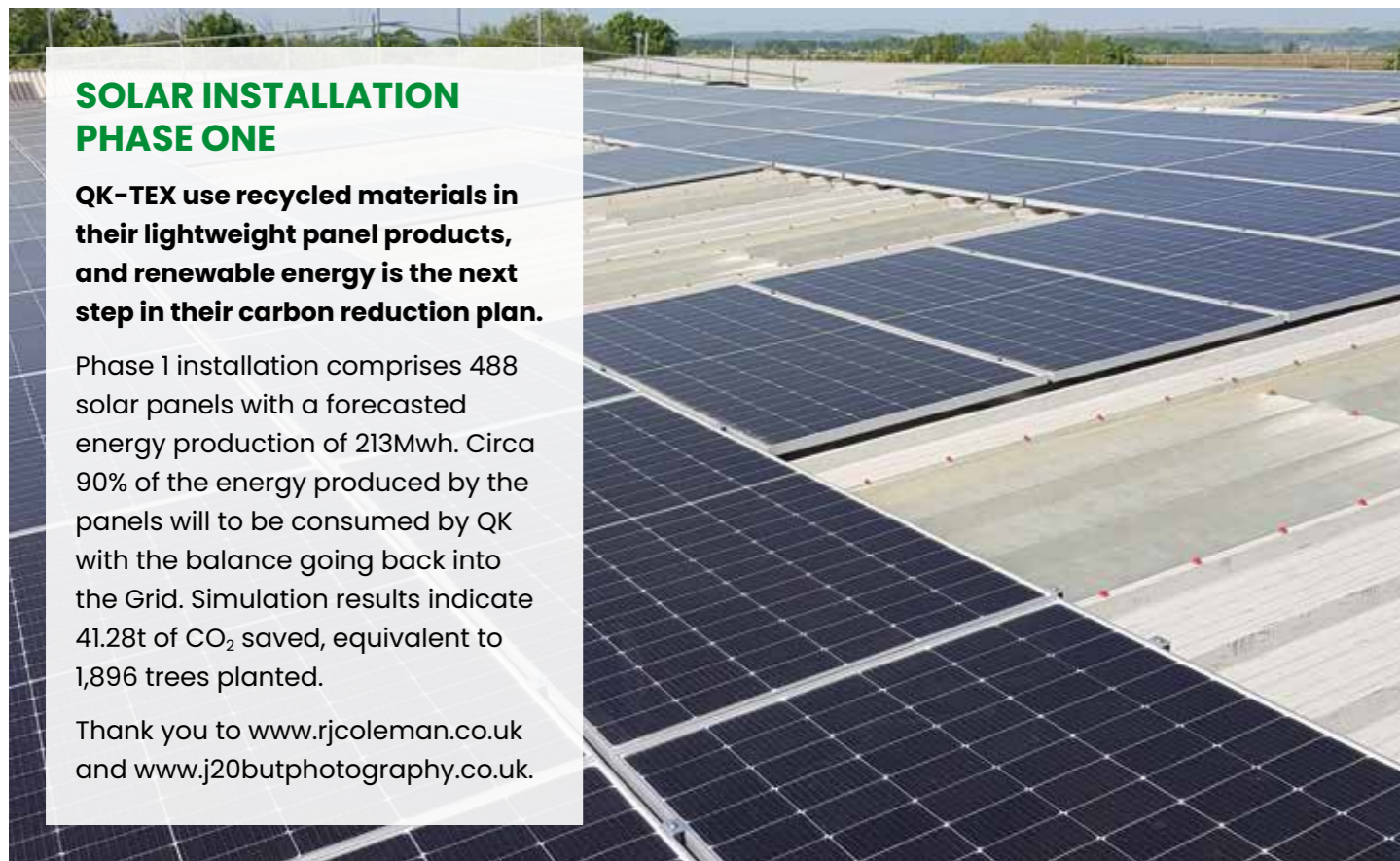
### Excellence in Polymer Distribution

Distributor of high performance Masterbatches, Additives, Polymers, Engineering materials and Compounds from stock.



Unit 3 Vaughan Park  
West Midlands  
DY4 7UJ  
Tel : 0121 520 8034  
Email : info@wardpolymers.co.uk  
Web : www.wardpolymers.com





**SOLAR INSTALLATION  
PHASE ONE**

**QK-TEX use recycled materials in their lightweight panel products, and renewable energy is the next step in their carbon reduction plan.**

Phase 1 installation comprises 488 solar panels with a forecasted energy production of 213Mwh. Circa 90% of the energy produced by the panels will to be consumed by QK with the balance going back into the Grid. Simulation results indicate 41.28t of CO<sub>2</sub> saved, equivalent to 1,896 trees planted.

Thank you to [www.rjcoleman.co.uk](http://www.rjcoleman.co.uk) and [www.j20butphotography.co.uk](http://www.j20butphotography.co.uk).



Ph. Federico Villa



**QK-TEX LTD**  
Enterprise Court, Brigg,  
North Lincolnshire, DN20 8UJ, UK

Tel: +44 (0)1652 654701  
Email: [sales-qktex@tex.co.uk](mailto:sales-qktex@tex.co.uk)  
[www.qkhoneycomb.co.uk](http://www.qkhoneycomb.co.uk)



DISCOVER MORE ABOUT OUR PRODUCTS  
ALUROLL | ALUMIX | DECOVER | WINDLIGHT | ALUGLASS

[fbsprofilati.it](http://fbsprofilati.it)





**HEMISPHERE**  
FREIGHT SERVICES LTD

## YOUR LOCAL GLOBAL LOGISTICS PROVIDER

Hemisphere look after your logistics,  
so you can focus on the things that matter most.



HAULAGE



AIR



OCEAN



WAREHOUSING



PROJECTS



EXPORT PACKING

Proud to work with  
Tex Group to provide  
a complete range of  
logistics solutions

- ▶ Seafreight - Worldwide
- ▶ Airfreight - Worldwide
- ▶ European
- ▶ Customs clearance
- ▶ Container loading and securing services



"We use Hemisphere for all our imports and exports. They handle everything and their experienced, and knowledgeable staff guide us on the paperwork requirements. We get a great service, and they save us money."

**Richard Melton**  
Commercial Director, BSP Tex Ltd



Scan QR code to find  
out more about us.

Find out how we can help with your logistics challenges at

[www.hemisphere-freight.com](http://www.hemisphere-freight.com)